

BLUE MOUNTAINS ABORIGINAL CULTURE & RESOURCE CENTRE



BLACK-MAIL

June

2017



Operating hours: Mon to Thurs: 9am-5pm & Friday: 9am-12noon

ACRC PH: 4782 6569, Email: admin@acrc.org.au

Assistant Managers Message.

I am honoured to be able to write the managers message for the Blackmail this week. Wayne and some of our other amazing workers have been away on training for some exciting new programs.

I would like to say a huge thank you to everyone in the community who have welcomed me with open arms in my role as the Assistant Manager at ACRC. I have enjoyed meeting lots of you and reuniting with familiar faces.

We hope you have all recovered from Winter Magic Festival, we thoroughly enjoyed seeing some friendly faces at our ACRC stall. I also want to thank everyone who dedicated their time and got involved to make the stall happen

It is an exciting time for the community of the Blue Mountains moving into NAIDOC with loads of events to celebrate. We hope to see you all at the upcoming NAIDOC events, including: the NAIDOC Awards followed by the Flag Raising Ceremony, the Gully Day, the NAIDOC Art Exhibition and to finish it all off with a bang at the NAIDOC Ball. Tickets for the NAIDOC ball are now on sale at ACRC or through Eventbrite. Contact myself, assist@acrc.org.au for further details. Full details of the Blue Mountains NAIDOC Events can be found on the reverse side of this page.

I wish you all a happy NAIDOC month. Let the celebrations begin.

Yours Sincerely,

Hannah Lange



Our Languages Matter

2-9 JULY 2017

This year's NAIDOC theme is 'Our Languages Matter' aims to emphasise and celebrate the unique and essential role that Indigenous languages play in cultural identity, linking people to their land and water and in the transmission of Aboriginal and Torres Strait Islander history, spirituality and rites, through story and song.

<http://www.naidoc.org.au/2017-national-naidoc-theme>

NAIDOC IN THE MOUNTAINS

3 July - NAIDOC Awards and Flag Raising

The NAIDOC Awards will be presented at 10am on the 3rd of July at the Blue Mountains Cultural Centre. Followed by the Flag Raising on the Carrington Lawn.

To Nominate for the NAIDOC Awards please contact:

Brad: 02 4780 5560 bmoore@bmcc.nsw.gov.au

Wayne: 02 4782 6569 manager@acrc.org.au

8 July - NAIDOC Gully Day

The NAIDOC Gully Day will run from 11am to 2pm on the 8th of July in the Katoomba Gully. Come celebrate with Entertainment, Face painting, Free lunch and loads of activities for the Jarjums (Kids). Transport will be provided from Katoomba train station.

14-23 July - NAIDOC Art Expo

The NAIDOC Art Exhibition opening night will be held on the 14th of July at the Katoomba Leura Community Centre (Old Library). The exhibition will stay on display until the 23rd of July.

To enter your art work please contact:

Brad: 02 4780 5560 bmoore@bmcc.nsw.gov.au

Wayne: 02 4782 6569 manager@acrc.org.au

28 July - NAIDOC Ball

The NAIDOC Ball will be held on the 28th of July at Scenic World, it is a fabulous night with dinner, entertainment and great company. Child Care and Transport will be available. Bookings are essential, spaces limited. Tickets go on sale on the 24th of June and will also be available at the ACRC stall at Winter Magic Festival.

For enquiries please contact:

Hannah: 02 4782 6569 assist@acrc.org.au

Elders Support Service

Hi all, here we are coming in NAIDOC Month. It's looking to be a great month. We also have our morning tea and we are going to do a lunch down at Springwood Hub.

With the changes to our services due to funding, we need to let you know how ACRC can offer these events. All of the Elders Support Service is funded by the Commonwealth Home Support Program. The details for you to be eligible to access the Elders Functions are listed below.

Eligibility for Commonwealth Home Support Program

- 65 years or older for not identifying Aboriginal or Torres Strait Islander
- **or 50 years or older and identify as an Aboriginal and Torres Strait Islander person**
- or 50 years or older and on a low income, homeless or at risk of homelessness

Please note as we only provide CHSP services to Aboriginal and Torres Strait Islander identified clients over 50.

Koori Playgroup

Have a great school holiday everyone.

I look forward to seeing you all again when Koori Playgroup will returns on Monday 24th July 2017. Time: 11am to 1pm at Katoomba Neighbourhood centre. New parents are always welcome. Happy Birthday to all celebrating their birthdays this month.

The ACYFS is a prevention and early intervention strategy that aims to provide Aboriginal families with children the best start in life. The strategy has a particular focus on supporting Aboriginal families expecting a baby or with children aged up to five years.

A gift from the past.



We now have a 3rd vehicle courtesy of 2012.

Back in 2012 one of our programs didn't spend all of their money, normally we have to give unspent money back, but this got lost in the system as we had new managers and the government programs kept changing hands. When this debt resurfaced Wayne was able to retain the funds allowing us to pay for our new stairway up to Oak street and to buy the Kia Cerato, the remaining amount also helped pay for the Elder Olympics. The Cerato will give us more flexibility with our transport program, so don't feel guilty for asking for transport, we should have enough vehicles to help.

Transport Eligibility

In order to use the Transport service clients must be eligible according to criteria set out by Transport NSW. All clients must be residents of the Blue Mountains LGA.

CHSP

To be eligible under the CHSP Program clients must be Aboriginal and be 50+ years of age. Clients must be signed up under the 'My aged care' system and have nominated ACRC to provide transport. If you are not signed up, please contact the Elders support service coordinator.

CTP

To be eligible under CTP clients must meet two of the following criteria; Aboriginal or TSI, financially disadvantaged, socially disadvantaged, linguistically disadvantaged, cognitively disadvantaged, isolated or living in a remote area, lacking public transport, living with a disability but do not qualify for NDIS.

NDIS

Must have signed up to the NDIS and have ACRC nominated to provide transport. Please contact your NDIS case worker to ensure your NDIS package includes transport.

Transport Contributions

From July our transport program will require contributions for use of the service. Contributions are required under our contract with Transport NSW who has provided the funding to allow us to provide this valuable program to give our community greater access to services. In order to use our transport program, you must be eligible and sign up with the Transport Coordinator. Further details of costs will be provided in the Transport terms and conditions when you sign up, but, a summary is provided below.

All ACRC programs will have a contribution requirement of \$2, this includes all local elder events, playgroups, community outreach days, women's group etc. Alternatively, you can pay a one off \$50 to cover the year for all ACRC events.

- Local trips will start at \$5 (multiple trips or trips that require the driver to leave and return will be charged more).
- Trips to Penrith specialists and Nepean hospital will start at \$15
- Trips to other metropolitan hospitals and specialists will start at \$20

Please note we will not reject anyone in dire circumstances, if you absolutely need transport we will do our best to help. We are always willing to negotiate and to come to an agreement, such as, offering discounts to regular reoccurring bookings or allowing for delayed payments or repayment plans.

Please note we are not a taxi service and we need time to arrange schedules, please make your bookings at least the day before.

Coralie Richmond
The Crab

Quietly resting
Under the Glistening sand
My saltwater crab
Waiting to spring from its depths
To a world of light and grab.

**ACRC Women's
Group is cancelled
this month due to
NAIDOC Events and
Art show happening
this July**

**Free Complementary
Therapies treatment sessions
at Blue Mountains Women's
Health and Resource Centre.**

Massage (up to 4 per year) and Acupuncture (up to 8 per year) are provided to Aboriginal and Torres Strait Islander women without charge. Services are delivered by qualified and experienced practitioners. Blue Mountains Women's Health and Resource Centre adheres to a trauma-sensitive service delivery model. Please phone to make an appointment on: 4782 5133 also let them know you found out through ACRC.

BLUEMOUNTAINS ABORIGINAL
CULTURE & RESOURCE CENTRE

NAIDOC BALL
"BREATH OF LIFE"




6.30PM - 11PM 28 JULY 2017

SCENIC WORLD
CNR VIOLET STREET & CLIFF DRIVE
KATOOMBA

Tickets
\$40 + booking fee for online
purchases
\$25 Concession

Tickets available from the ACRC
office and Eventbrite.com.au
Call: (02) 4782 6569

LIVE MUSIC . DEADLY FOOD . GREAT COMPANY





Photos and information from BMCC

Cotoneaster

Perennial woody shrubs. Cotoneaster has many different habits — prostrate forms through to shrubs and trees taller than 4 m. Stems are reddish.

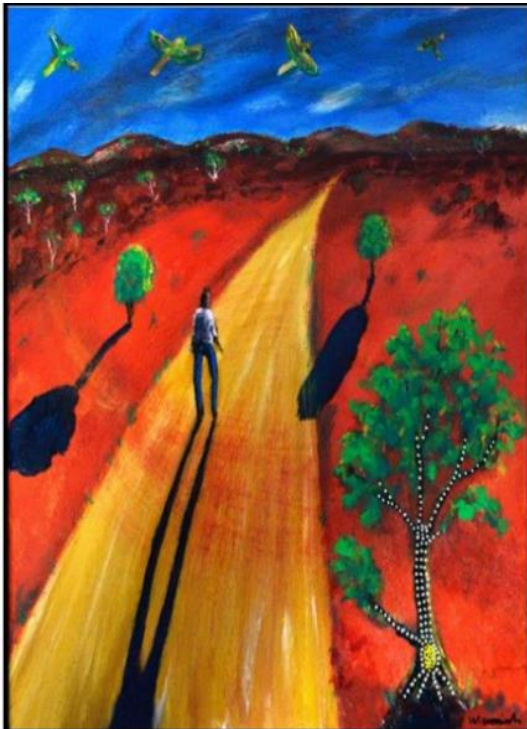
Leaf size changes with different habits but the shape is always the same. Leaves are furry and discolourous (having the two surfaces different in colour). Leaves occur in groups of three.

Flowers are small, white, often insignificant, densely clustered, highly attractive to bees, from spring to summer.

Fruit are numerous, in conspicuous clusters of small berries, orange to red, autumn into winter.

- Seedlings can be hand pulled if all the roots can be removed.
- More established plants will need to be cut and painted using herbicide.
 - Larger plants can be stem injected.

Because the berries are bird spread, treat plants before they fruit. Bag and dispose of berries, or place in a hot compost to kill the seed



Aboriginal Art Festival

15-23 July 2017
10am—4pm daily

**Katoomba
Community Hall**

Opening night 14 July, 6.30pm

Proudly supported by



**BMCC ABORIGINAL
ADVISORY COUNCIL**



For more info: www.bmcc.nsw.gov.au/maidoc or 02 4782 6569